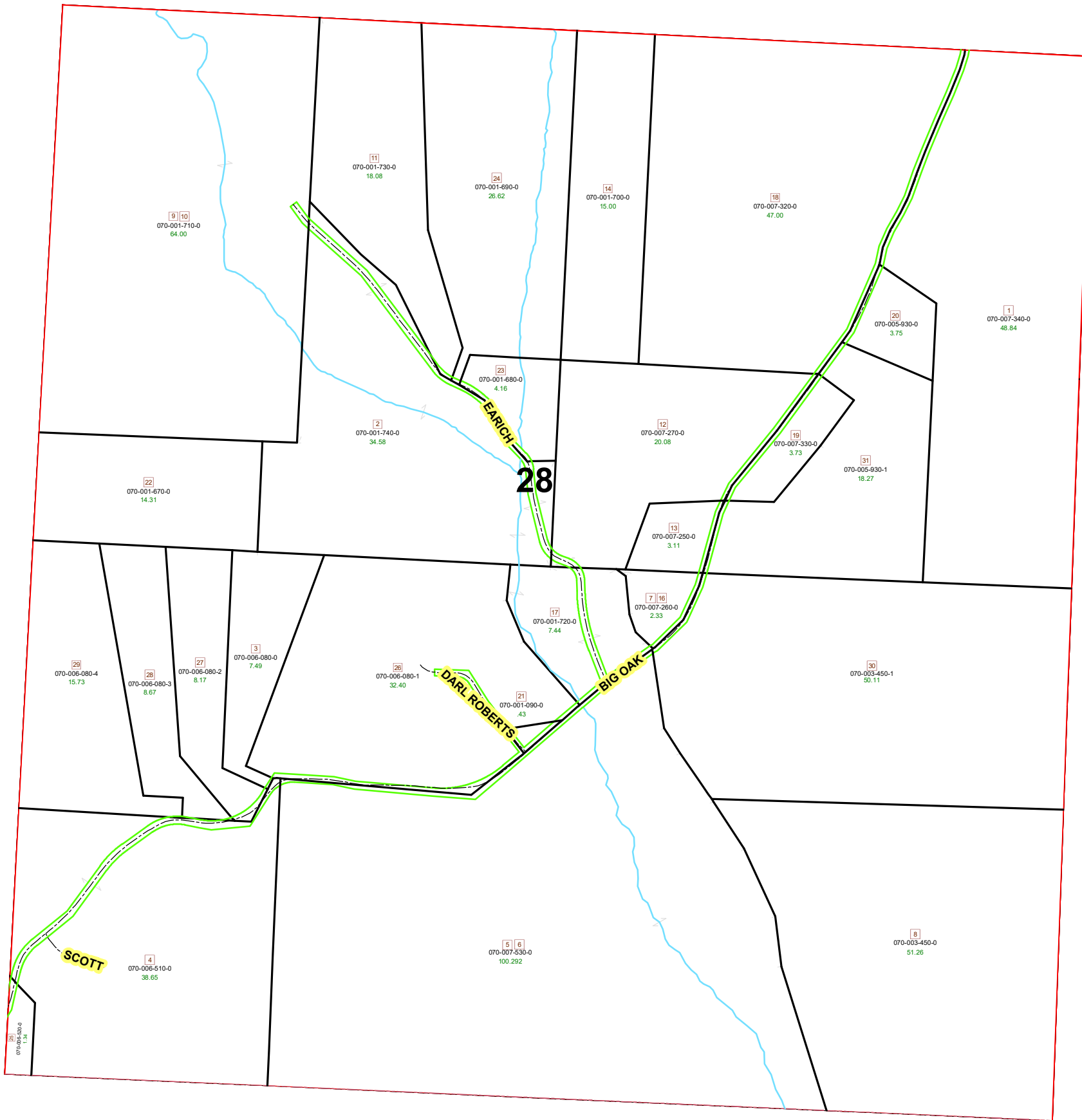
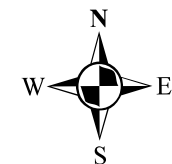


# MALTA TOWNSHIP SECTION 28 R-12 TWP-10 MORGAN COUNTY, OH

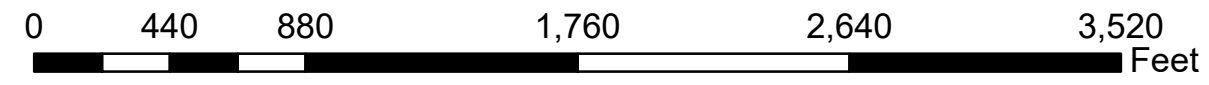


PIN	VOL	PAG	Owner	LegalDescr	Acres
070-005-930-1	OR218	1343	BRUNER LAND COMPANY INC	R12 T10 S28 SD 31	18.271
070-001-090-0	OR172	19	COLUMBIA GAS TRANSMISSION CORP	R12 T10 S28 SD 21	0.431
070-006-080-4	OR205	2988	DUEMMEL CHARLES E & DAWN M	R12 T10 S28 SD 29	15.73
070-001-720-0	OR64	541	EARICH'S HAPPY VALLEY FARMS LIMITED	R12 T10 S28 SD 17	7.44
070-001-740-0	OR64	541	EARICH'S HAPPY VALLEY FARMS LIMITED	R12 T10 S28 SD 2	34.583
070-001-730-0	OR64	541	EARICH'S HAPPY VALLEY FARMS LIMITED	R12 T10 S28 SD 11	18.084
070-001-710-0	OR64	541	EARICH'S HAPPY VALLEY FARMS LIMITED	R12 T10 S28 SD 9-1	64
070-001-670-0	OR64	541	EARICH BARRY & DEBBIE	R12 T10 S28 SD 22	14.314
070-005-930-0	OR224	1906	HIMLER TODD WILLIAM & JANICE ELLEN	R12 T10 S28 SD 20	3.75
070-007-530-0	OR225	272	KING LESLIE L & TERRY L	R12 T10 S28 SD 5-6	100.292
070-001-680-0	OR63	325	LAHMERS STEVEN E & SANDRA J	R12 T10 S28 SD 23	4.162
070-001-690-0	OR63	325	LAHMERS STEVEN E & SANDRA J	R12 T10 S28 SD 24	26.626
070-001-700-0	OR63	325	LAHMERS STEVEN E & SANDRA J	R12 T10 S28 SD 14	15
070-007-260-0	OR190	528	PRATT WILLIAM & ANTOINETTE	R12 T10 S28 SD 7-1	2.335
070-007-250-0	OR190	528	PRATT WILLIAM & ANTOINETTE	R12 T10 S28 SD 13	3.119
070-007-330-0	OR190	528	PRATT WILLIAM & ANTOINETTE	R12 T10 S28 SD 19	3.73
070-007-270-0	OR190	528	PRATT WILLIAM & ANTOINETTE	R12 T10 S28 SD 12	20.088
070-003-450-0	OR233	3054	RURAL FARMS LLC	R12 T10 S28 SD 8	51.2645
070-003-450-1	OR233	3054	RURAL FARMS LLC	R12 T10 S28 SD 30	50.118
070-006-520-0	D.V 175	745	SCOTT JERRY D & MELISSA A	R12 T10 S28 SD 25	1.347
070-006-510-0	OR219	3071	SCOTT KENNY & JERRY & JAN	R12 T10 S28 SD 4	38.653
070-006-080-0	OR234	1593	SPICER STEPHEN W	R12 T10 S28 SD 3	7.49
070-006-080-2	OR234	1593	SPICER STEPHEN W	R12 T10 S28 SD 27	8.17
070-006-080-3	OR234	1593	SPICER STEPHEN W	R12 T10 S28 SD 28	8.67
070-006-080-1	OR214	3222	SPICER STEVE W & STEVEN WILLIAM	R12 T10 S28 SD 26	32.4
070-007-340-0	OR215	2624	TOMES TREES LLC	R12 T10 S28 SD 1	48.84
070-007-320-0	OR215	2624	TOMES TREES LLC	R12 T10 S28 SD 18	47



Boundaries		Hidden	ROW
-----	Roads	-----	Section
-----	County	-----	Township
-----	Parcel	-----	Parcels
-----	Hydro	-----	Lot

Source: Morgan County Engineer's Office  
 Author: Marcia Wolfe  
 Date: 6/24/2020



Disclaimer: The information that these maps contains is for reference purposes only. Please bring any erros to the attention of the Engineer's Office staff.  
 Thank you